



# norr building corp

**engineered foundation solutions**

3866 Prospect Avenue, Suite 12  
West Palm Beach, FL 33404  
Phone (561) 881-7939 Fax (561) 881-7824  
email admin@norrbuild.com  
www.norrbuild.com  
CBC037854

## CASE STUDY

### Using Helical Pier/Piles To Repair Settled Slab COMMERCIAL BUILDING

### REPAIR SETTLED SLAB

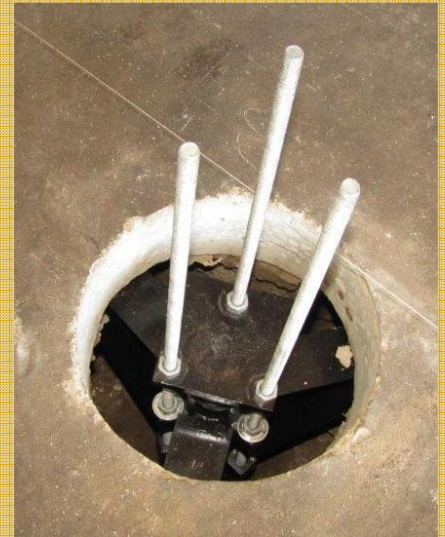
**Project:** Commercial Building  
**Location:** Lantana, FL  
**Date:** September, 2013

**Challenge:**

Norr was chosen by a large local underground utility contractor to level their eight inch thick, 5,000 sq ft reinforced floor which, in some locations, had settled up to four inches in twenty years.

**Solution:**

The soil analysis revealed that the shop was built on a landfill, and that helical pier/piles would need to be installed to a depth of thirty-five feet to reach competent soil. Sixty-five pier/piles were installed to a capacity of ten tons. By using high capacity slab brackets, Norr was able to level the slab to within  $\pm 1/4$  inch with no damage. The voids were filled with flowable fill to stabilize.



**We are proud to announce we are now SBE Certified**