
NEW 220 FT LONG – 20 FOOT HIGH RETAINING WALL Palm Beach

We received a set of plans for an extremely challenging project A 220 ft long and, at points, 20 foot high retaining wall for a Palm Beach oceanfront home. After weeks of examining the plans, and discussing various installation method options with structural engineers and the contractor, we devised an approach to the project which would require incredible amounts of co-ordination and co-operation in all facets of the installation between all parties involved. We could not use the adjacent lot for the installation, and the neighbor's retaining wall was a mere 18" from the new wall being installed. The project was completed in two phases.

PHASE I The first phase involved excavating and installing 14 helical piles along the bottom of the lower part of the retaining wall to stabilize the base. The property was then filled.



Footer for wall excavated. Auger cast Piles were used for wall support. Wall Construction begins. Helical piles Installed in lower section for lateral wall Support.

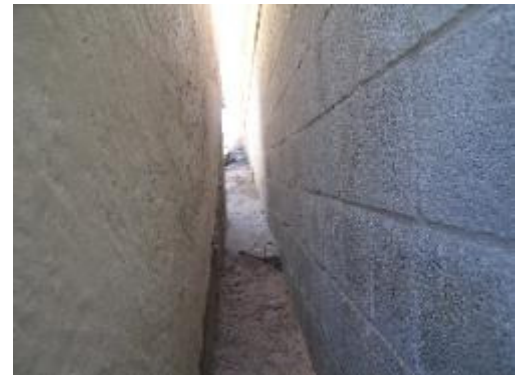


Wall construction continues.



Excavated area is filled. More fill is brought in to next elevation.

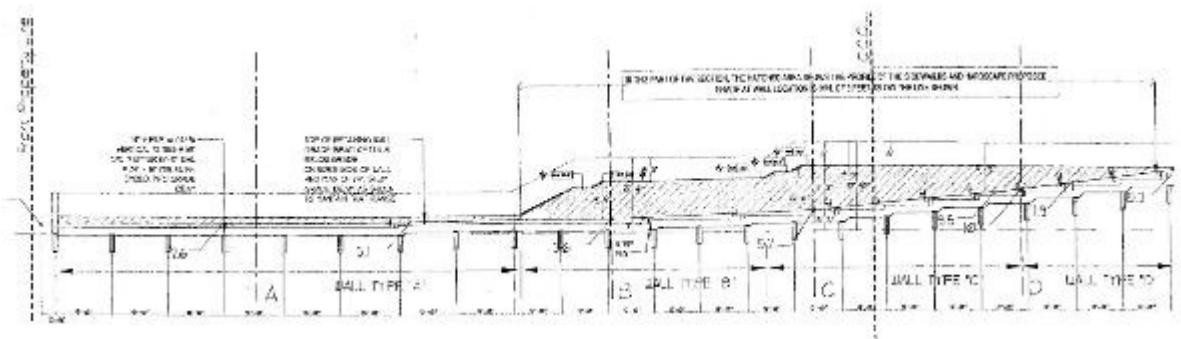
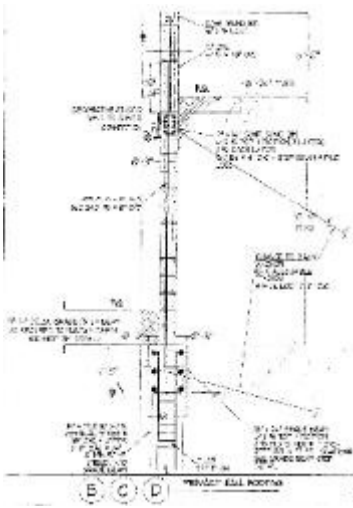
PHASE II The second phase involved installing 11 more piles to stabilize the new upper part of the wall. The property was then filled approximately 8 more feet on the homeowner's side of the wall. After this retaining portion was completed, a 5' privacy wall was added.



FINISHED PROJECT



TECHNICAL DRAWINGS



For more information on this project, please contact us.



norr building corp
engineered foundation solutions

3866 Prospect Avenue, Suite 12
West Palm Beach, FL 33404
Phone (561) 881-7939 Fax (561) 881-7824
email admin@norrbuild.com
www.norrbuild.com
CBC037854